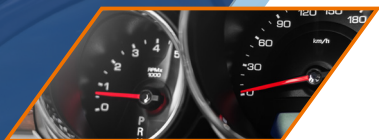


1-888-338-0389  
www.centuryservicecorp.com



Exclusively developed by:



Administered by:



This brochure is not an actual contract but is an outline of coverage available through the program. For complete details concerning terms, conditions, limitations, and exclusions, please refer to your program contract or warranty. Certain coverages may overlap with the manufacturer's warranty, and where they do overlap, the VSA coverage is reduced by the duration or coverage of the warranty.

Neither this brochure, nor the corresponding agreement, is an insurance product.

California License No. 0C88598

Copyright © - CENTURY AUTOMOTIVE SERVICE CORP. All rights reserved.  
Any unauthorized use will be prosecuted in accordance with the applicable law.

Reorder Code: S\_KGPI\_B\_1118

 **CENTURY**

**KARR GUARD PLUS**



MULTI-LAYERED  
PROTECTION PACKAGE

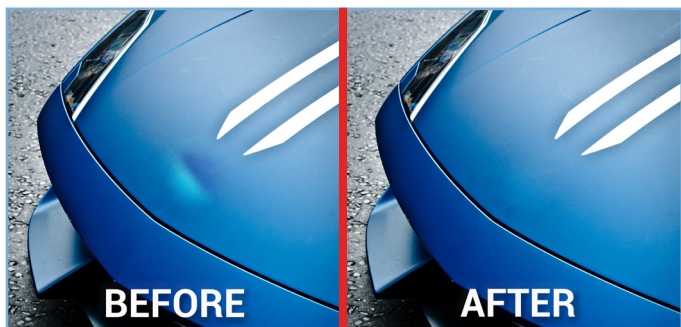




## Windshield Repair/Replacement Protection

If your vehicle's windshield is damaged by flying rocks or other road debris:

- Windshield replacement is costly and inconvenient.
- A professional technician will repair or replace your damaged windshield.
- Saves on expensive Windshield deductible.



## Dent & Ding Protection

- Protects the value of your vehicle.
- Easily removes minor dents and dings in vertical panels repairable by Paintless Dent Repair process.
- Works from behind the vehicle exterior body panels.
- No sanding, painting or body fillers.

# KARR GUARD PLUS

## Smart Key Replacement Coverage

- Keys and transponders for your vehicle can be very expensive to replace.
- We will provide replacements for your keys and transponders should they be lost, stolen or destroyed.<sup>1</sup>



## Emergency Roadside Assistance

- Nationwide roadside service is available 24 hours a day, 7 days a week, 365 days a year.
- Jump Start battery service.
- Flat Tire assistance.
- Emergency fuel, oil, fluid and water delivery service.



<sup>1</sup>Maximum of \$450 or \$800 based on plan selection. See individual Agreement for complete details, limitations and exclusions.